



***Aeolos-V***

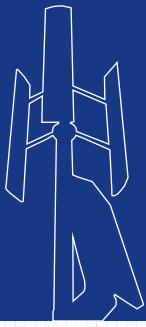
# Vertical Wind Turbine Brochure

*Aeolos wind turbine*  
**SINCE 1986**



***Aeolos-V 2kW***

AEOLOS



**Aeolos-V**  
windturbinestar.com

**Aeolos wind turbine**  
**SINCE 1986**



### Specification

Generator Type: Three Phase Permanent Magnet

Rotor Height: 2.8 m (9.19 ft)

Rotor Width: 2.0 m (6.56 ft)

Turbine Weight: 89 kg (197.82 lbs)

Blades Material: Aluminum Alloy

Blade Quantity: 4 pcs

Working Temperature: -20 °C to 50 °C

Design Lifetime: 20 years

### Performance

Rated Power: 2000 W

Max Output Power: 2600 W

Cut In Wind Speed: 2.0 m/s (4.46 mph)

Rated Wind Speed: 10 m/s (22.3 mph)

Survival Wind Speed: 50 m/s (111.5 mph)

Generator Efficiency: 96%

Noise Level: < 45 dB(A)

Warranty: 5 year

### Safety

Blades RPM Limitation: 320 RPM

PWM Dump Load: 3 kW Box

Mechanical Brake: Manual

### Optional

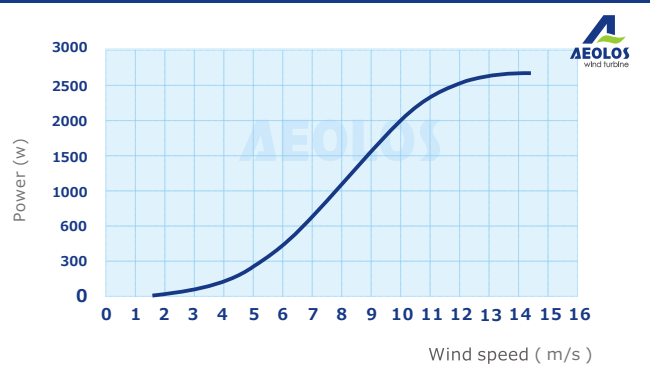
Remote Monitoring System ( Internet/Wireless)

Auto Hydraulic Brake System ( Unattended Site)

Off Grid: 48 V or 96 V

Grid Tie: 240 V

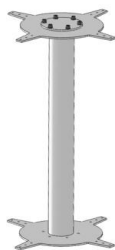
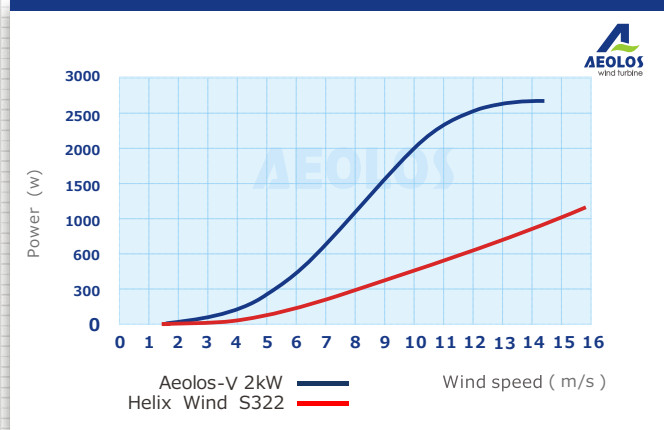
**Aeolos-V 2kW Power Curve**



**Aeolos-V 2kW Wind Turbine Annual Energy Output**

Wind Speed(m/s)	Annual Energy Output (kWh)	Wind Speed(m/s)	Annual Energy Output (kWh)
3 m/s	657 kWh	8 m/s	9285 kWh
4 m/s	1226 kWh	9 m/s	13140 kWh
5 m/s	2541 kWh	10 m/s	17520 kWh
6 m/s	3942 kWh	11 m/s	20586 kWh
7 m/s	6132 kWh	12 m/s	21908 kWh

**Aeolos-V 2kW Power Curve VS Helix S322**



**5 YEAR WARRANTY**



Aeolos Wind Energy, Ltd (UK)  
27 Old Gloucester Street, London WC1N 3AX  
United Kingdom  
Tel: +44 208 242 1884  
E-mail: sales@windturbinestar.com





**Aeolos wind turbine  
SINCE 1986**



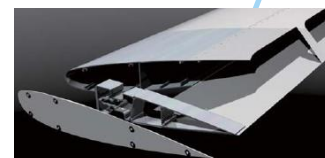
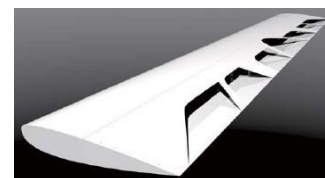
## Why Choose Aeolos V 2kW Wind Turbine?

### Triple Safety Protection

**Special Blade Design:** Aeolos blades use the special aerodynamic design which limits the max rotating speed to 320 rpm even the wind speed is 30m/s or 40m/s. It is more safe and reliable than traditional vertical axis wind turbine.

**PWM Dump Load:** Aeolos-V 2kW wind turbine has the 3kW dump load box with PWM loading function. This will consume the over power output and control the voltage in strong wind speed.

**Mechanical Brake:** The manual mechanical brake can stop the wind turbine for maintenance or typhoon coming. We have the auto hydraulic brake system for remote installation site without people checking.

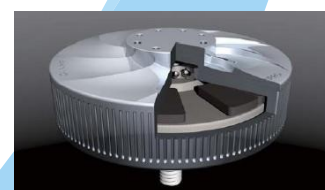


### High Efficiency

**Low Cut-in Wind Speed:** Aeolos-V 2kW could start up with 1.5m/s wind speed and has the power output in 2.5m/s to inverter. This is more efficient than the vertical wind turbines with a 3.5m/s or even 4.5m/s cut in wind speed.

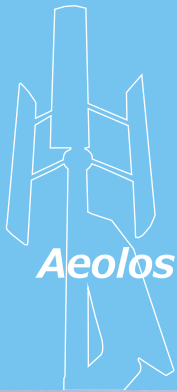
**More Annual Output:** According to the AWEA standard, Aeolos-V 2kW annual output is 2541 kWh at 5m/s wind speed. The annual output at 10m/s is 17520 kWh.

**MPPT Charger For Off Grid:** Aeolos-V 2kW use 48V MPPT charging controller to increase the charging efficiency to 94%. It can charge the battery bank when wind speed is above 3.0m/s.



**5 YEAR WARRANTY**



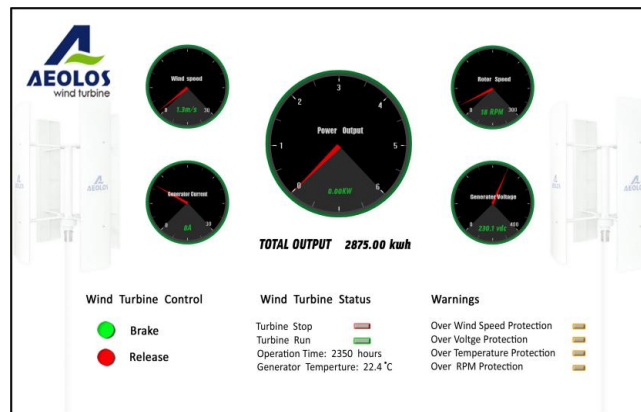


**Aeolos wind turbine**  
**SINCE 1986**



**Intelligence Control**

**Remote Monitoring System:** Customer can remote monitor the wind turbine operation, wind speed and power output in office, home, airport and anywhere through the internet.



**Auto Hydraulic Brake System:** It is suitable for the remote installation sites, like the island, telecommunication tower station which does not have people checking and monitoring. This system can auto stop the wind turbine in over voltage, over wind speed, generator over temperature and all any other faults. It can auto release the wind turbine to run after the abnormal warnings.



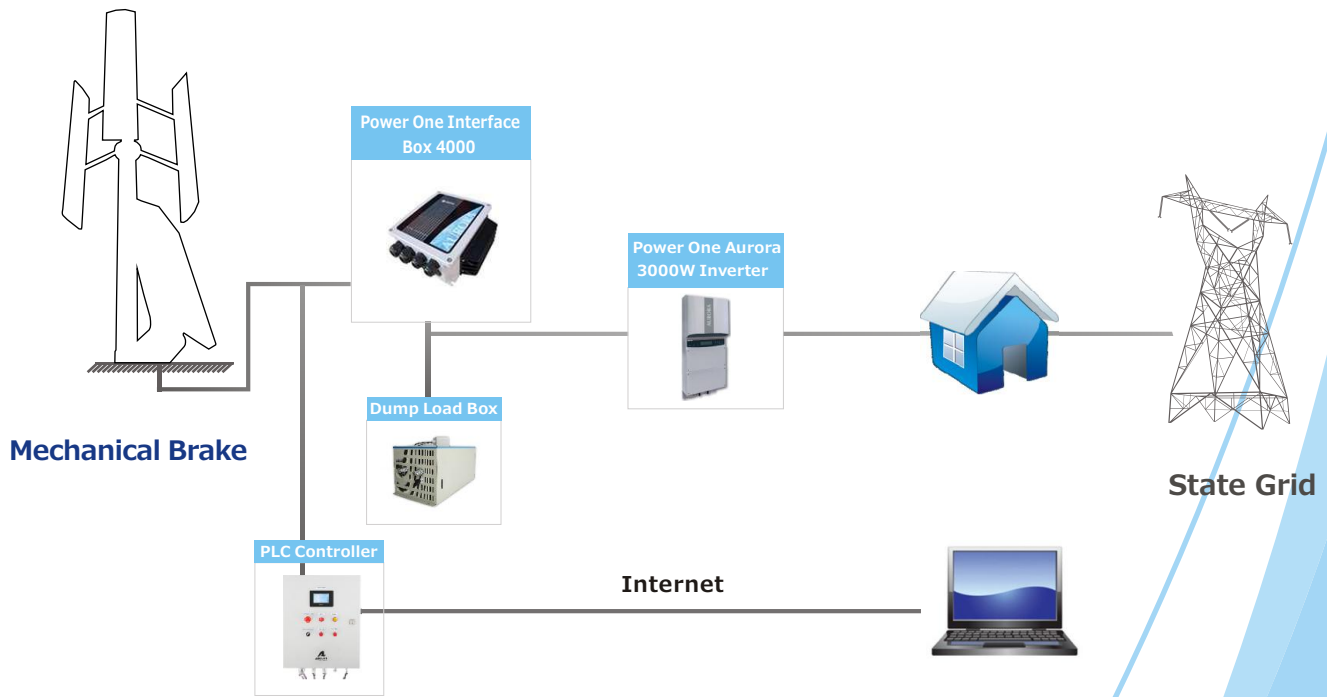
**5 YEAR WARRANTY**





### Wiring Diagram

#### Grid-on



#### Grid-off

